

# 「あかり」全天サーベイのカタログ・ アーカイブ・サーバ (AKARI-CAS) 公開

山内 千里 , 稲田久里子 , 片野雅之 , 藤島幸美 , 山村一誠 (ISAS/JAXA)  
石原大助 (名古屋大学)



# AKARI-CAS 概要

- ISAS/JAXA の宇宙科学データ公開サービス「DARTS」  
(<http://darts.jaxa.jp/>) にて公開する Web サービス
- 「あかり」 FIS 4 バンド , IRC 2 バンドの全天カタログ  
- 天体数: FIS 42 万 , IRC 87 万 (今回は画像データ提供なし)
- RDB を利用した検索ツール  
Radial Search , Rectangular Search ,  
Cross Identifications , SQL Search ,  
ローカル端末用の検索ツール `sqlcl_akari.py`
- ビジュアルツール  
Explore Tool , Image List Tool  
- SDSS , DSS2 , 2MASS , IRIS の QL 画像の表示に対応  
- 外部サイト (SIMBAD , NED , ADS 等) への動的なリンク生成

# Radial Search

This page provides an easy interface to search FIS or IRC objects within a radius(arcmins) of a point. The point (lon,lat) can be set by J2000, B1950, Ecliptic or Galactic coordinates.

Coordinate conditions:

<input checked="" type="radio"/> Coordinate	J2000	longitude* [deg or `hh:mm:ss.ss']	180
		latitude* [deg or `[±]dd:mm:ss.s']	1.5
<input type="radio"/> Object Name	Name to identify by SIMBAD(e.g., M101, NGC4900, etc.)		
Radius		100	arcmins

\* `[±]12:34.56', `[±]12 34 56.78' and `[±]12 34.56' styles are also allowed.

Instruments and Quality:

	Enable?	Min		Max
<input type="checkbox"/> FIS	<input type="checkbox"/>	3	fQual_65	3
	<input type="checkbox"/>	3	fQual_90	3
	<input type="checkbox"/>	3	fQual_140	3
	<input type="checkbox"/>	3	fQual_160	3
<input checked="" type="checkbox"/> IRC				

Note: Qualities are connected by 'AND'.

Database: EDR2 (Fis:b2.0 Irc:b1.0.2) Columns:  all  digest Rows:  all  max 10

Format:  HTML  TEXT delimiter: , newline: LF

reset submit

## Your SQL command was:

```

SELECT o.*, n.distance
FROM fGetNearbyObjCel('lrc', 'j2000', fLonStr2Deg('180'), fLatStr2Deg('1.5'), 100) n, lrcObj o
WHERE n.objID = o.objID
ORDER BY n.distance
LIMIT 10
    
```

Click number of objid column to open the Explore Tool.

objid	objname	ra	dec	flux_09	flux_18	fqual_09	fqual_18	flags_09
<a href="#">100228302</a>	1159239+014935	179.8497622	1.82655340000076	2.50369	0.583297	0	0	0
<a href="#">100228003</a>	1158338+005219	179.641203999999	0.872149000000136	0.0811478		0	0	0
<a href="#">100227869</a>	1158129+005208	179.55393525	0.869051500000126	0.628377	0.218134	0	0	0
<a href="#">100229524</a>	1202423+015837	180.676404750014	1.97706975000651	0.240531	0.322294	0	0	0
<a href="#">100228169</a>	1159033+003150	179.763768999999	0.530650333334387	2.81983	1.27555	0	0	0
<a href="#">100229216</a>	1201464+003155	180.443425333333	0.532131000000486	0.298772		0	0	0
<a href="#">100229396</a>	1202212+003348	180.5886704	0.563582800000045	1.30054	0.367151	0	0	0
<a href="#">100227040</a>	1156037+005842	179.015522000001	0.978335000000669	0.0953927		0	0	0
<a href="#">100227387</a>	1156582+022443	179.242622499999	2.41205825000055	0.401005		0	0	0
<a href="#">100226791</a>	1155238+010545	178.849480555556	1.09590977777899	0.214879		0	0	0

Back Forward Reload Stop **DARTS** <http://133.74.198.4/astro/akari/cas/tools/explore/obj.php?objid=100229524&scale=2&grid=true> Search Print

## AKARI-IRC-b1.0.2 J1202423+015837

Shrink Enlarge

Database=EDR2, Instrument=IRC, objID=100229524 **Get all data**

ra	180.67640475 [12:02:42.34]	dec	1.97706975 [+01:58:37.5]
ra1950	180.03581805 [12:00:08.60]	dec1950	2.25545864 [+02:15:19.7]
lambda	179.83381823 [11:59:20.12]	beta	2.08291679 [+02:04:58.5]
l	275.97718257 [18:23:54.52]	b	62.27089338 [+62:16:15.2]

nDataPos: 4

FIS image

Under construction

IRC image

Under construction

SDSS i,r,g (SDSS CAS)

IRIS 100μ,60μ,25μ (SkyView)    2MASS K,H,J (SkyView)    DSS2 IR,R,B (SkyView)

Zoom :

Image scale :  "/pix     Draw grid     Invert image

### AKARI-CAS Explore Tool

Input form:

Database :

Instrument :

Search radius :  arcmins

Coordinate system :

Longitude [deg or `hh:mm:ss.ss`] :

Latitude [deg or `[±]dd:mm:ss.s`] :

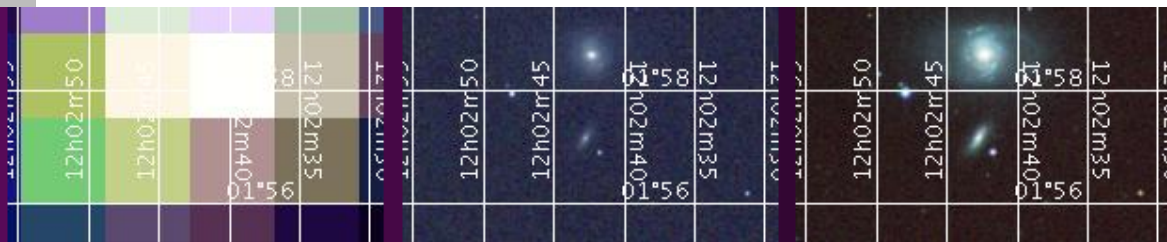
Name to identify by SIMBAD (e.g., M101, NGC4900, etc.) :

ObjID:

You can select version of FIS and IRC catalogs by [Database selector](#).

SDSS i,r,g image is provided by [SDSS SkyServer](#) of the [SDSS project](#).

[SkyView](#) has been developed by [HEASARC](#) at the [NASA / GSFC Astrophysics Science Division](#).



project.

SkyView has been developed by HEASARC at the NASA / GSFC Astrophysics Science Division.

Zoom : Image scale :  "/pix  Draw grid  Invert image

flux_09	0.240531	flux_18	0.322294
fErr_09	0.0397144	fErr_18	0.0400567
fQual_09	0	fQual_18	0
flags_09	0	flags_18	0
nScanC_09	4	nScanC_18	5
nScanP_09	0	nScanP_18	0
mConf_09	1	mConf_18	1
nData_09	2	nData_18	5
meanAB_09	4.20069	meanAB_18	4.58858

Search other catalogs on the CAS database

<a href="#">FIS</a>	<a href="#">IRC</a>		
---------------------	---------------------	--	--

External links

<a href="#">SDSS search</a>	<a href="#">NED search</a>	<a href="#">SIMBAD search</a>	<a href="#">ADS search</a>
-----------------------------	----------------------------	-------------------------------	----------------------------

SkyView links

<a href="#">DSS</a>	<a href="#">DSS1 Red</a>	<a href="#">DSS1 Blue</a>	<a href="#">H-<math>\alpha</math> Comp</a>
<a href="#">DSS2 IR</a>	<a href="#">DSS2 Red</a>	<a href="#">DSS2 Blue</a>	
<a href="#">2MASS-K</a>	<a href="#">2MASS-H</a>	<a href="#">2MASS-J</a>	
<a href="#">IRIS 100<math>\mu</math></a>	<a href="#">IRIS 60<math>\mu</math></a>	<a href="#">IRIS 25<math>\mu</math></a>	<a href="#">IRIS 12<math>\mu</math></a>

Other Surveys (Document):

**続きはポスターで**